



# Car Showrooms

Things have not been the same since March, but as the Government has now told all those that can't work from home to return to work it is important that we look at how we can return safely and securely.

Evolve has produced this document to help show the latest thermal screening, facial recognition, and temperature detection products we can offer.

Car Showrooms



# Reception Desk and Entrance Doors

The EvolveFace 5T is an all-in-one temperature detection device that can also be used as a facial recognition terminal with and time & attendance function.

It is a versatile all-in-one device that can be used in several ways.

- Temperature detection only.
- Temperature and facial recognition.
- Temperature, facial recognition, and time & attendance.

This device can sit on a reception desk or it can be wall mounted, customers or members of staff that look into the unit will have their temperature



checked, before wandering around the showroom.

The device can also control a secure area allowing only members of staff registered on the device to gain access.

In addition, it can be used to monitor time and attendance.



Car Showrooms



## BODY SCREENING

The Thermal 360 imaging camera is a highly accurate portable handheld temperature measuring instrument which can help in the fight against COVID-19.

It has an High / Low temperature alarm, central point temperature measurement, auto tracking and real-time temperature display.

The camera can be connected to a PC for image analysing and supports SD card and USB import: with powerful image processing capability.



This camera is ideal for checking customers and members of staff temperature as they walk towards a reception deck/area.

Car Showrooms



# BODY SCREENING

## Wrist Temperature Measurement and Face



EvolveWrist is a standalone device that can check wrist temperature with face detection and provides a reminder if no mask is worn. Making this perfect for use in the classroom or main reception area.

It features accurate temperature measurement real-time alarm of people with fever. Support real-time statistics of total number of temperature measurement both normal and abnormal.

### Disclaimer

*Temperature devices are not intended to diagnose or monitor any medical condition or illness. These products are supplied as a first-line defence for organisations that wish to identify and check people entering their buildings. It is down to the organisation to determine how that information is used, and the appropriate reaction to take.*

## Face Recognition with Temperature Detection.



The AndroitFace 7T face detection terminal with temperature detection can be easily interfaced with most makes of visitor and staff management systems via the Wiegand interface such as the Paxton Net2 controller.

Face recognition means that a person entering the building does not need to touch any surface providing a TouchLess entrance control solution.

The terminal can work as a stand-alone unit to control a simple door, pedestrian turnstile, or gates; they can also be networked.



Car Showrooms



## BODY SCREENING

### IP Thermal Bullet Camera



EvolveIP thermal bullet camera is perfect for all types of premises such as schools and universities to capture the face and temperature of a crowd of people.

This camera is great to check high volumes of staff and students quickly and securely ideal for site entrances and exits.

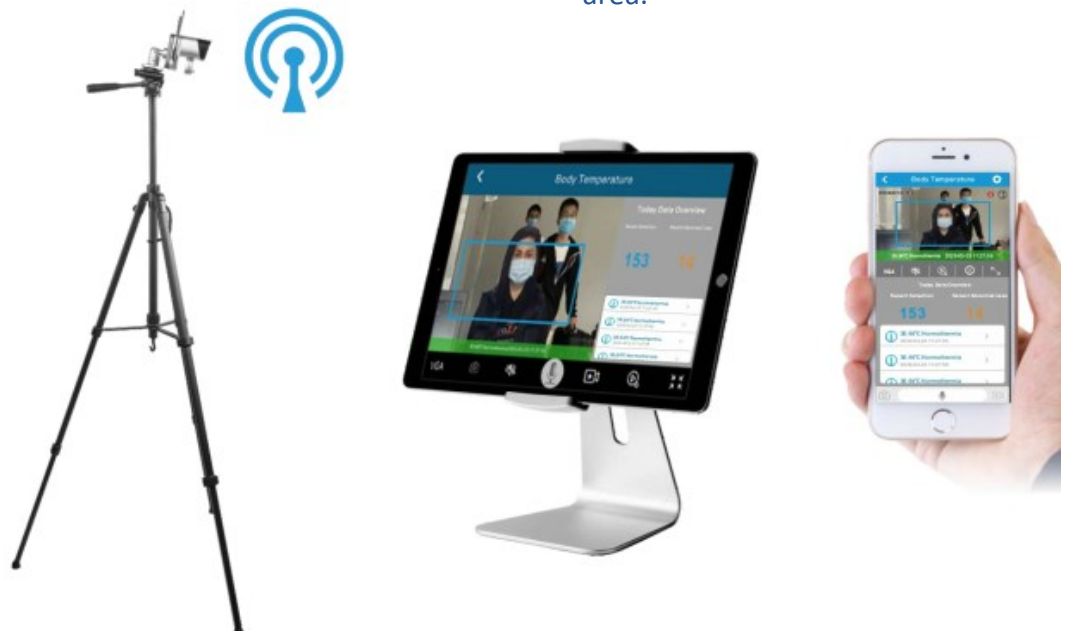
### Body Temperature Smart Screening Camera



EvolveBody is an intelligent Wi-Fi thermal imaging camera for body temperature screening with built-in alarm.

It supports network processing for high-speed real-time temperature measurements, recording and surveillance.

The camera is perfect for places with high volume of people in a designated area.





# ENTRANCE CONTROL

## LinuxFace 7 - Face Recognition Access Control Tablet



The LinuxFace 7 offers a secure, TouchLess and cost-effective way of controlling who has access to your building and when their access is allowed.

Installing an access control system with face recognition means that you will never have to replace lost or stolen tokens and a face can easily be barred from the system.

Our face tablets can be mounted to a standard door or any make of pedestrian or vehicle entrance control turnstile, gate, or barrier.

## EvolveFace 5 - Face Recognition Access Control Tablet



The EvolveFace 5 is an employee face recognition terminal with time and attendance that can also be used for access control to a secure area.

The terminal is ideal for construction, manufacturing, small or large companies, food processing, education, hospitals, and surgeries.

Face recognition for time and attendance control offers a secure, TouchLess and cost-effective way of controlling who has access to your building and when their access is allowed.



Car Showrooms



## ENTRANCE CONTROL

Face Recognition with Temperature Detection.

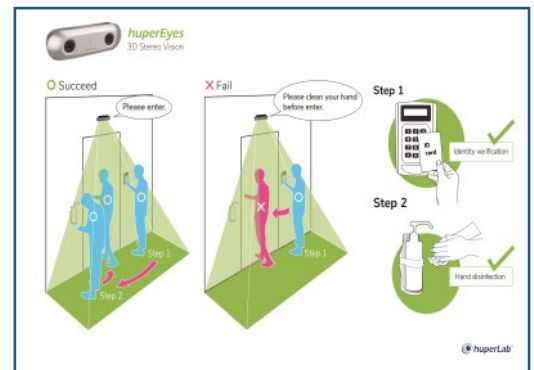


Face recognition for entrance control offers a secure, TouchLess and cost-effective way of controlling who has access to your building and when their access is allowed.

LinuxFace 2.45 face recognition tablet is the smallest device in the world providing deep learning technologies with high performance processor and algorithms.

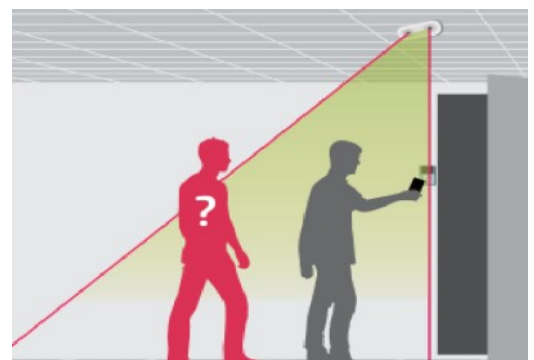
This device is an ALL-IN-ONE face detection, IC & ID card reader. Due to its size this device is ideal for securing an individual room within your building. It can be used in conjunction with our 3D tailgating detection camera

3D Tailgating Detection and two-point verification.



The 3D depth-sensing technology can achieve the high accuracy level to 98% with high tolerance to light and shadow changes, and the overlapping of moving objects.

With greater video analytics integration and system flexibility, it is capable of people counting, virtual fence, surveillance and security, and customer service improvement for retail stores, transportation, home, and store security.



# Vehicle Compound

We can also supply, install and service.

- Vehicle swing and sliding gates.
- Vehicle barriers.
- Pedestrian turnstiles.
- Hoped posts.
- Rhino Posts.



Car Showrooms



# HOW TO CONTACT US



## Evolve Security Products Limited

Unit 4, Kenyons Yard,  
Weyhill Road,  
Andover, Hampshire.  
ENGLAND  
SP10 3NP

### Email:

[sales@EvolveSecurityProducts.com](mailto:sales@EvolveSecurityProducts.com)

### Telephone:

01264 334786

### Web:

[www.EvolveSecurityProducts.com](http://www.EvolveSecurityProducts.com)

[www.Facial-Recognition.co.uk](http://www.Facial-Recognition.co.uk)

[www.Paddle-Gate.net](http://www.Paddle-Gate.net)



## UK DISTRIBUTORS

### North Branch

#### BFT Automation UK Ltd.

Units C2-C3,  
The Embankment Business Park.  
Vale Road,  
Heaton Mersey,  
Stockport.  
SK4 3G6L.

#### Telephone:

01614 560 456

#### Web:

[www.bftautomationuk.com](http://www.bftautomationuk.com)

### South Branch

#### BFT Automation (South) Ltd.

Enterprise House,  
Murdock Road,  
Dorcan,  
Swindon.  
SN3 5HY

#### Telephone:

01488 674 750

#### Web:

[www.bftautomationuk.com](http://www.bftautomationuk.com)

### Ireland Branch

#### BFT Automation Ltd.

Unit D3, City Link Business Park.  
Old Ness Road,  
Dublin 12.

#### Telephone:

+353 1 456 4711

#### Web:

[www.bftautomationuk.com](http://www.bftautomationuk.com)